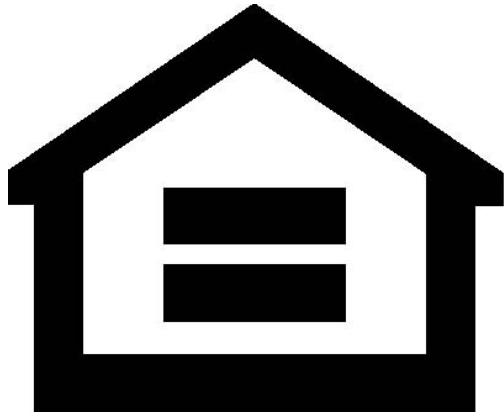


Opportunity Mapping in Baltimore



**Opportunity
Collaborative**

For a Greater Baltimore Region.

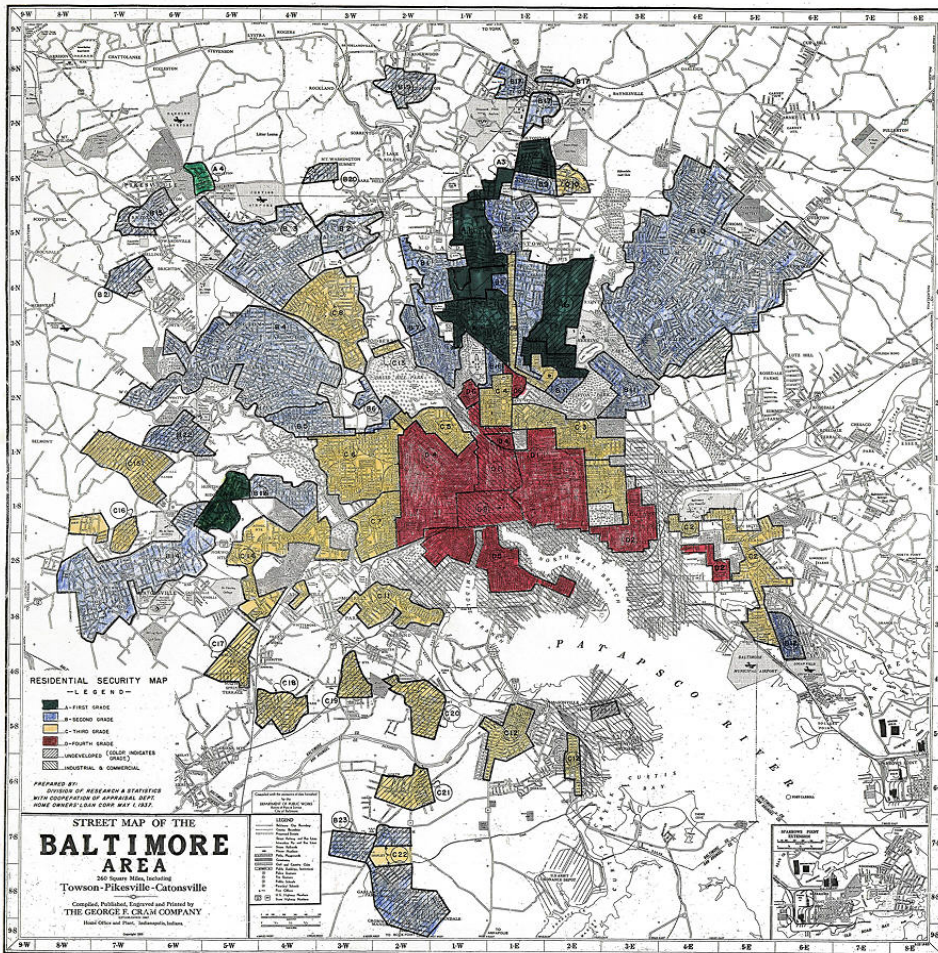
Baltimore Regional Fair Housing Group

*National Housing Conference Opportunity Mapping Webinar
June 21, 2016*



Baltimore Metropolitan Council

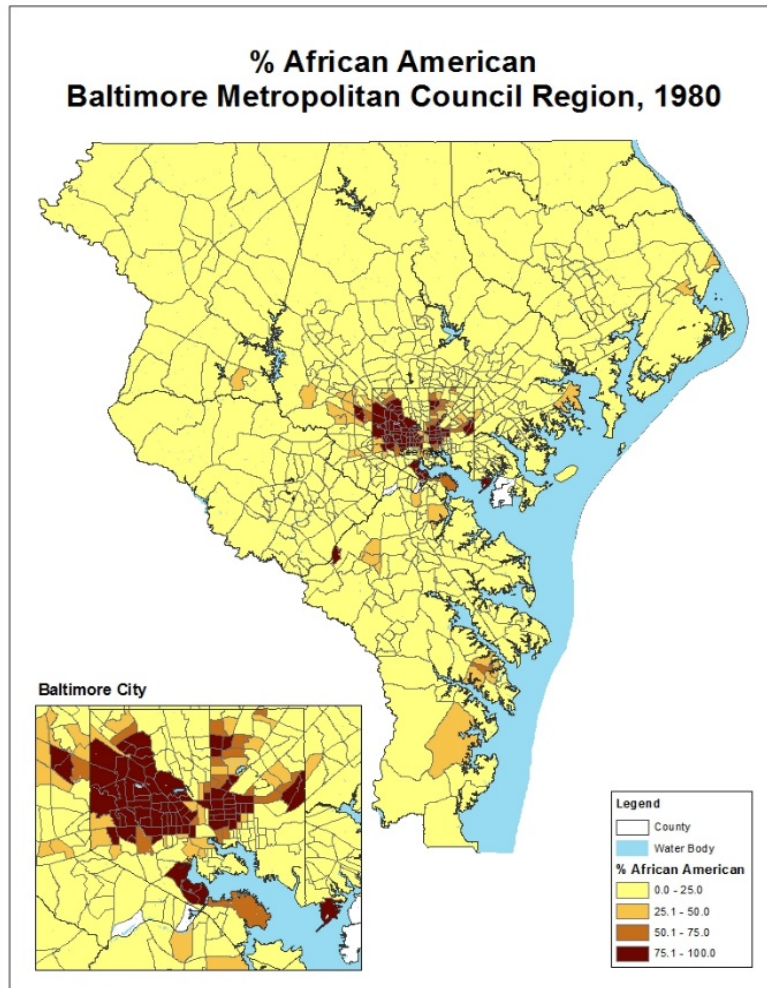
Historic Discrimination



- 1937 Home Owners Loan Corporation “redlining” map
- Discouraged home loans in communities of color and integrated communities
- Recommended lowest rates in racially restricted white communities
- Federal Housing Administration (FHA) continued policies into 1960s.

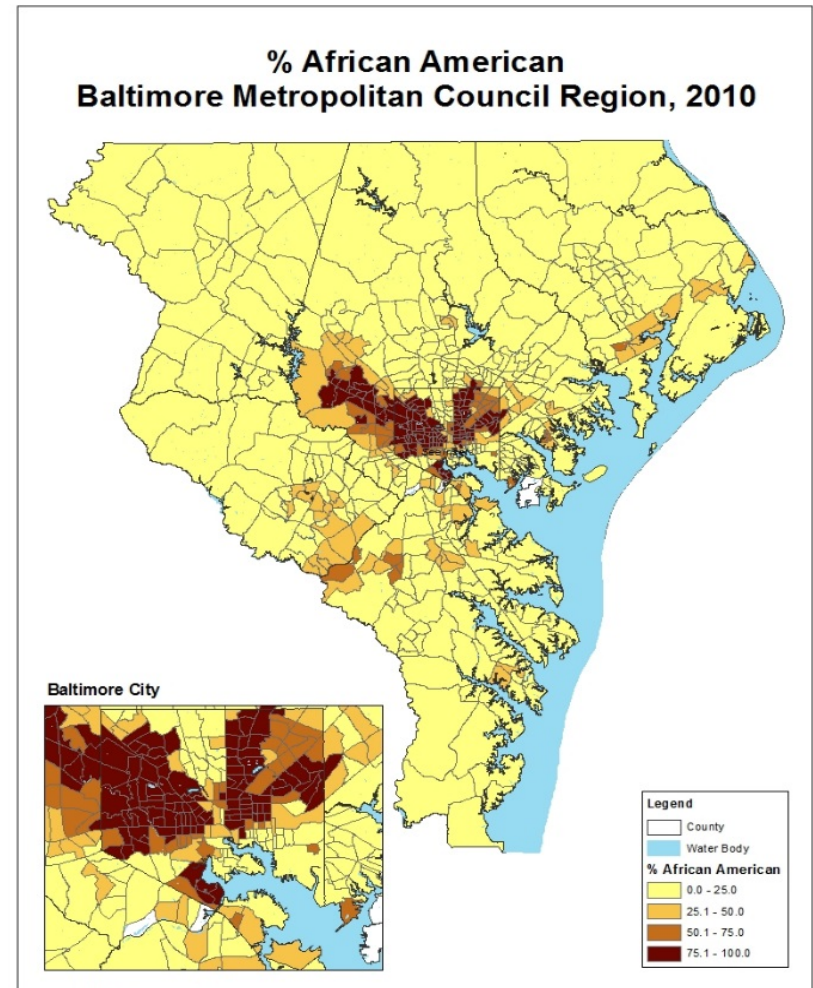


Patterns of Racial Change



Source: BMC, U.S. Census, ESRI

Map created by the Housing Strategies Group, NCSG, 2013

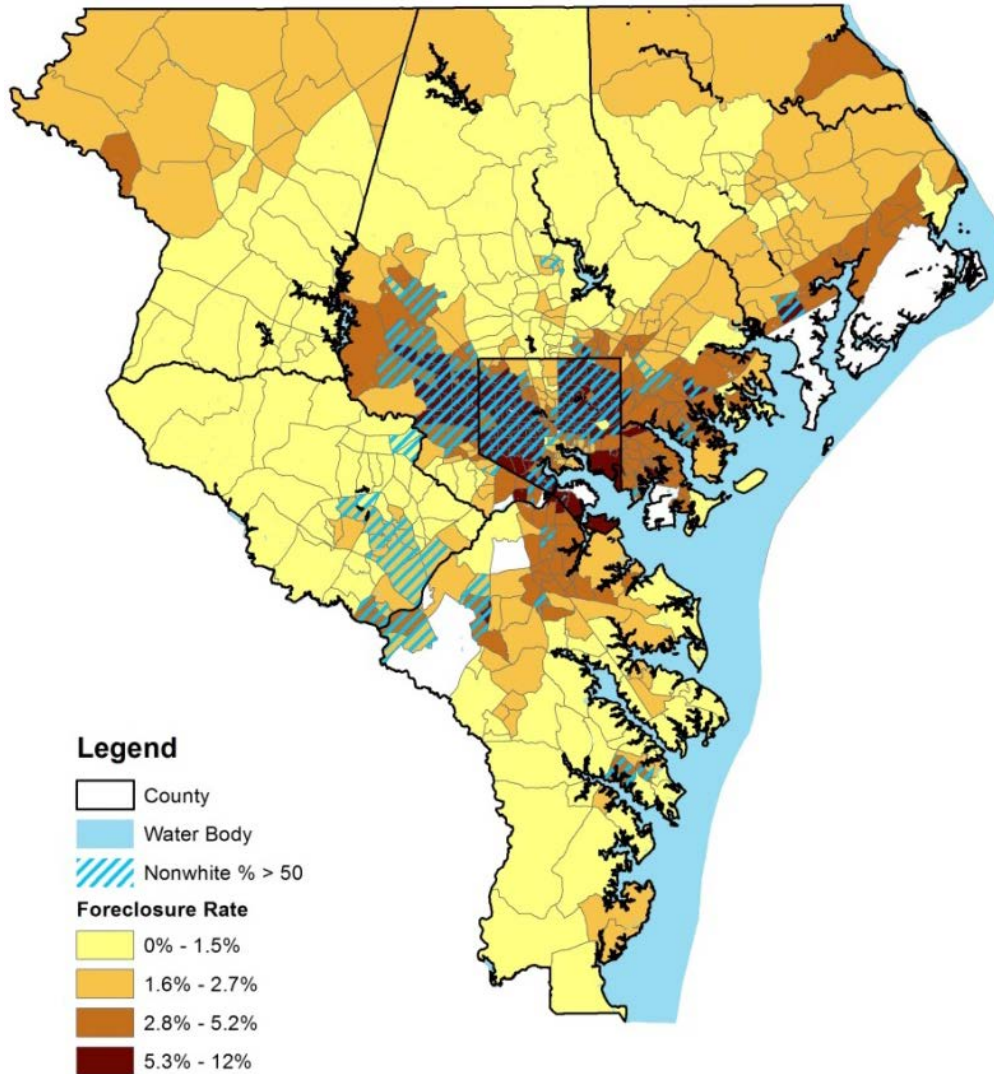


Source: BMC, U.S. Census, ESRI

Map created by the Housing Strategies Group, NCSG, 2013

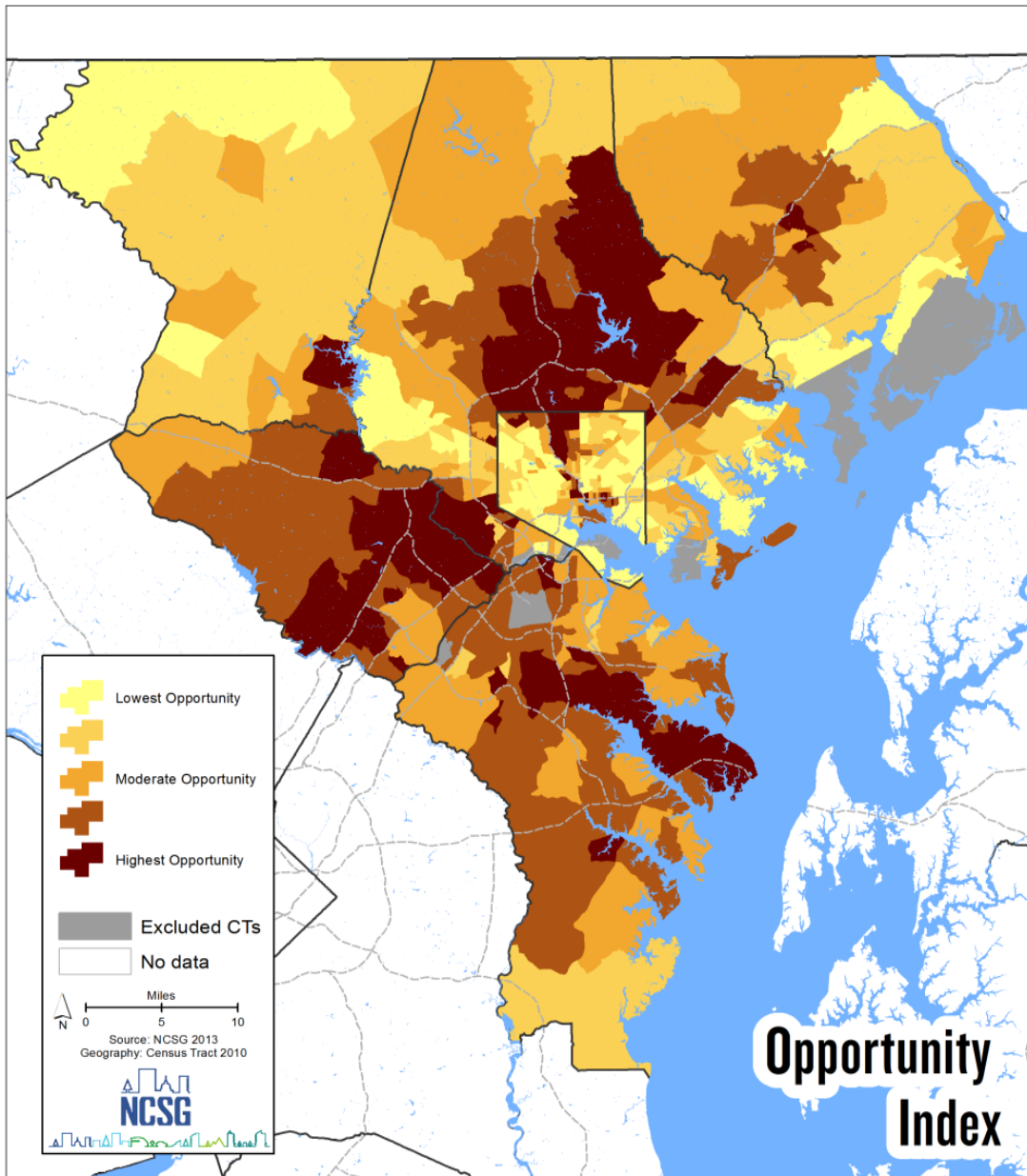


Foreclosure and Race



- Communities of color disproportionately affected by subprime loans & foreclosures that followed
- Baltimore City 2008 discrimination lawsuit against Wells Fargo resolved by 2012 settlement, including \$7.5 million for City

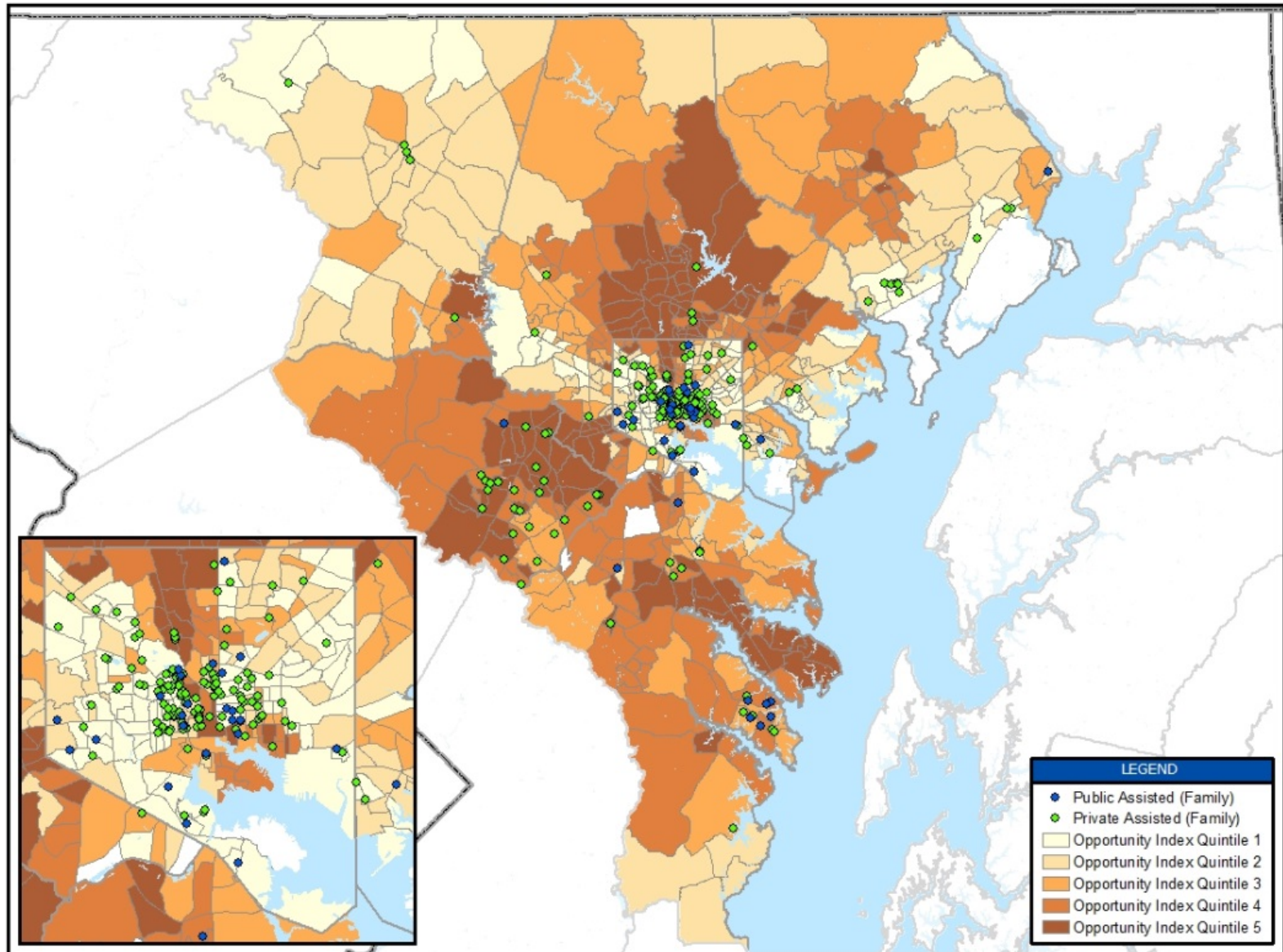
OMAP Composite Opportunity Index



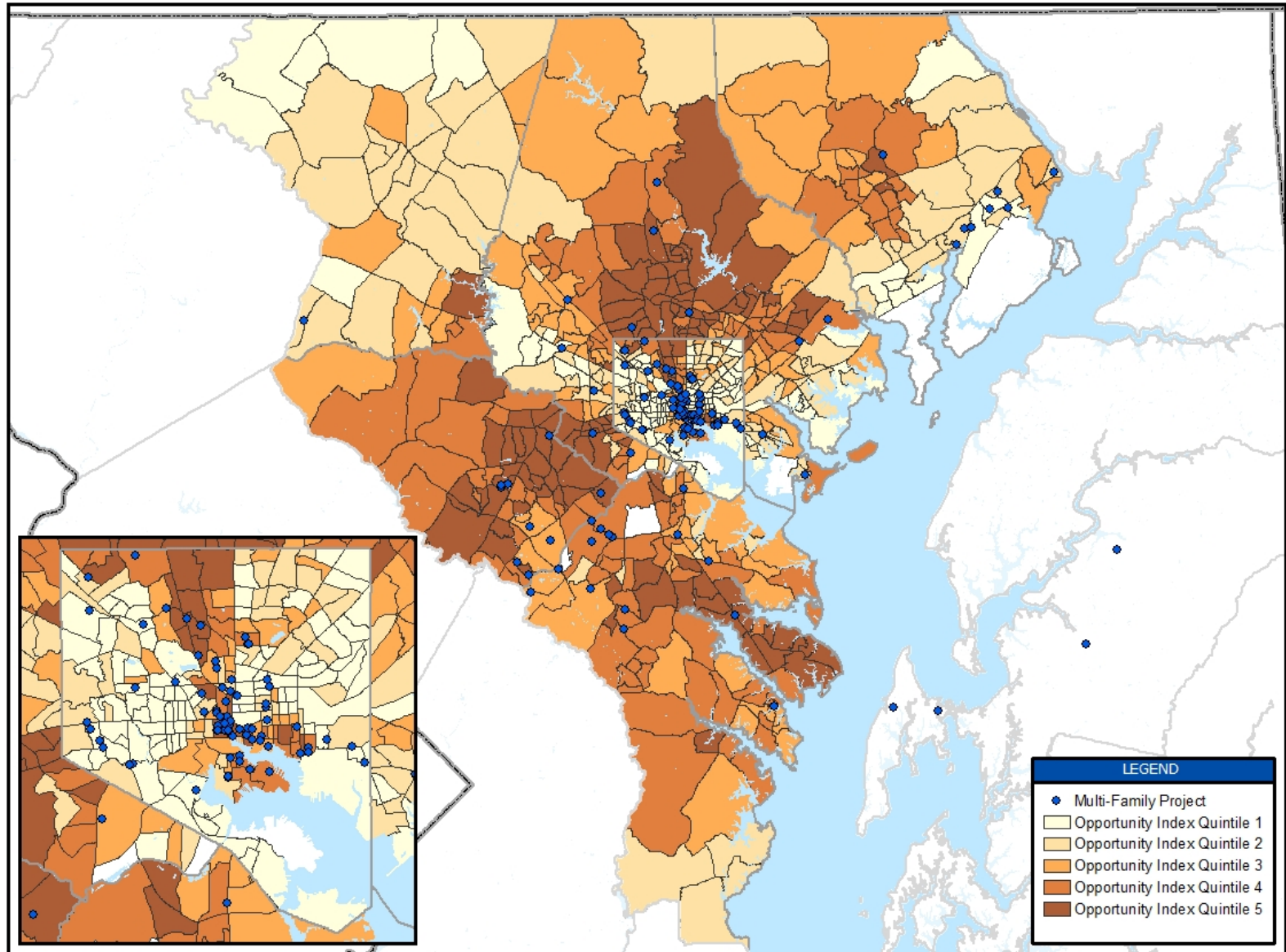
Indicators

- Education
- Housing/Neighborhood
 - Home Value
 - Percent Vacant & Abandoned
- Social Capital
 - Racial Diversity
 - Percent with Bachelor's Degree
- Public Health & Safety
 - Crime Risk
 - Rate Low Birth Weight
 - Access to Parks
- Employment & Workforce
 - Job Growth
 - Jobs within Short Commute
- Transportation & Mobility
 - Short Commutes
 - Walk Score
 - Access to Transit

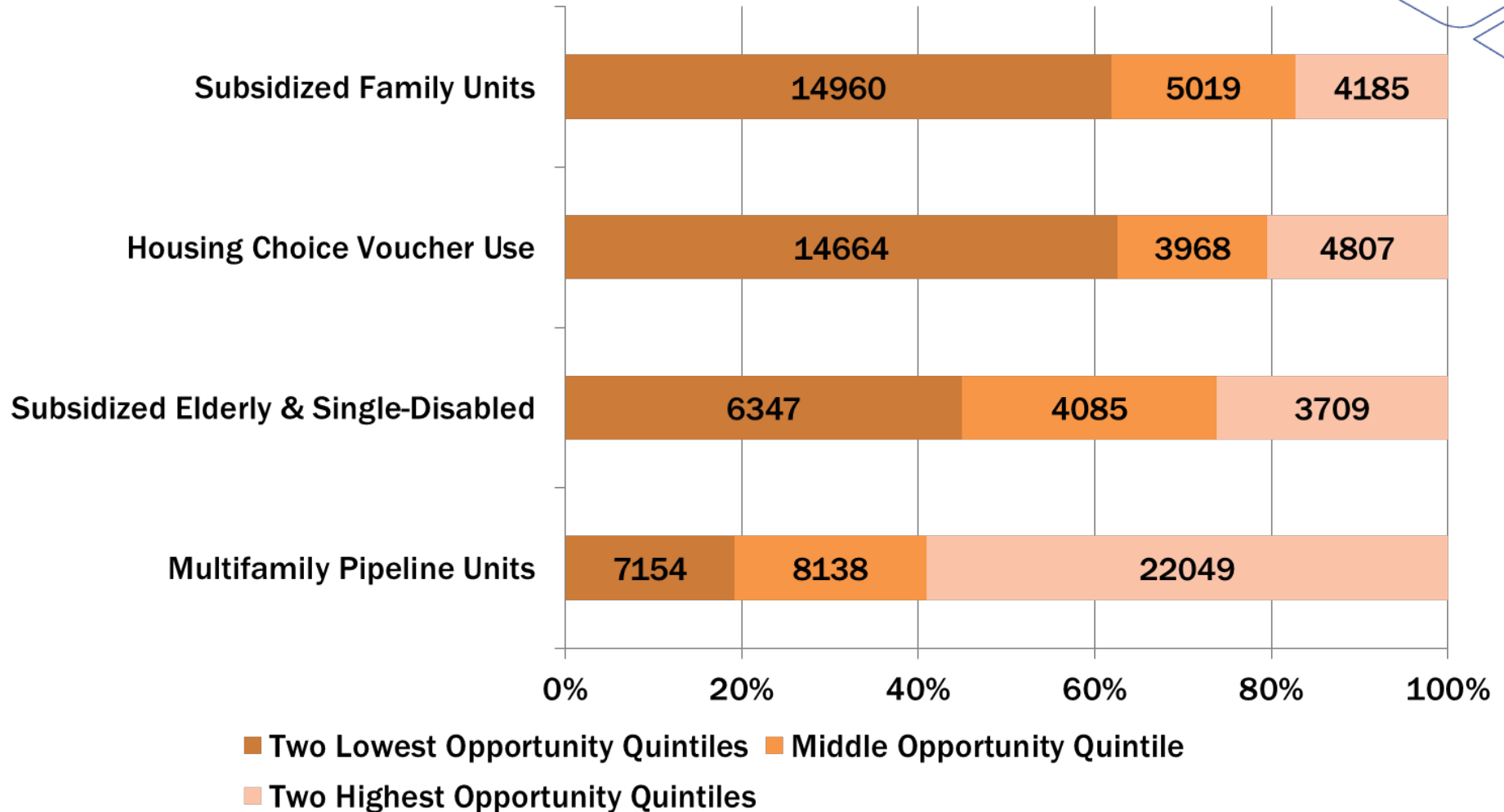
Subsidized Housing & Opportunity



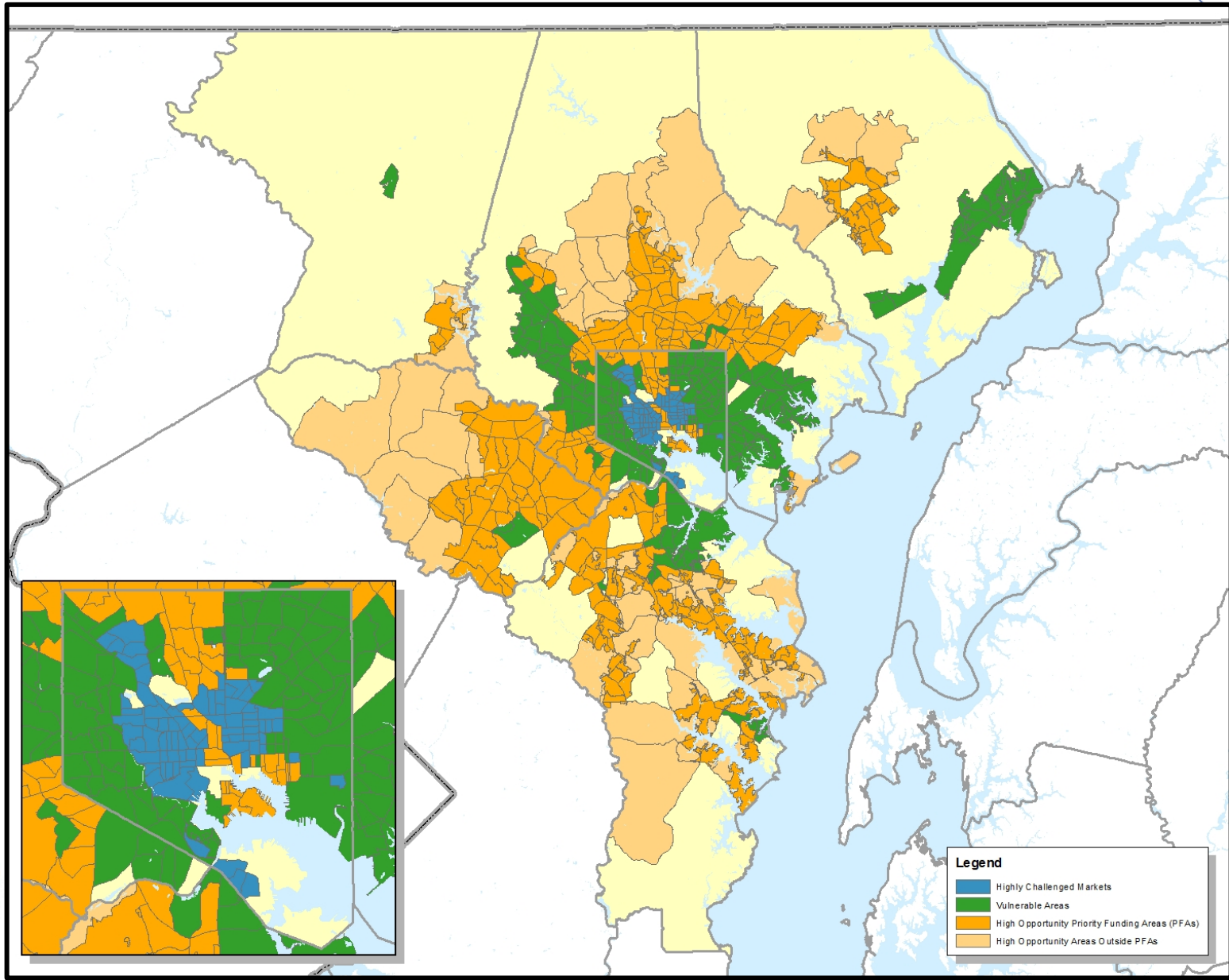
Planned Multifamily Housing



Housing and Opportunity

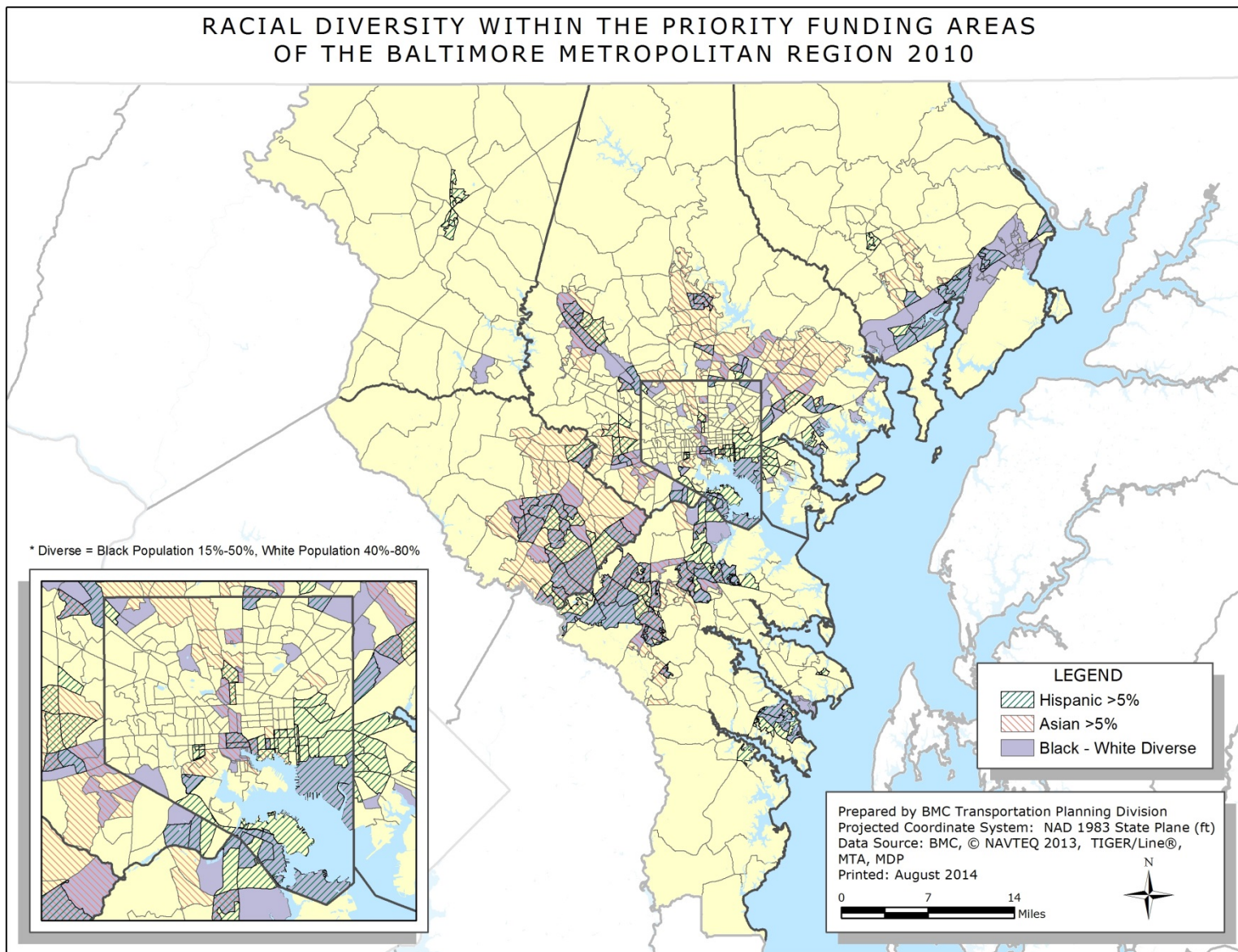


Place-Based Strategies



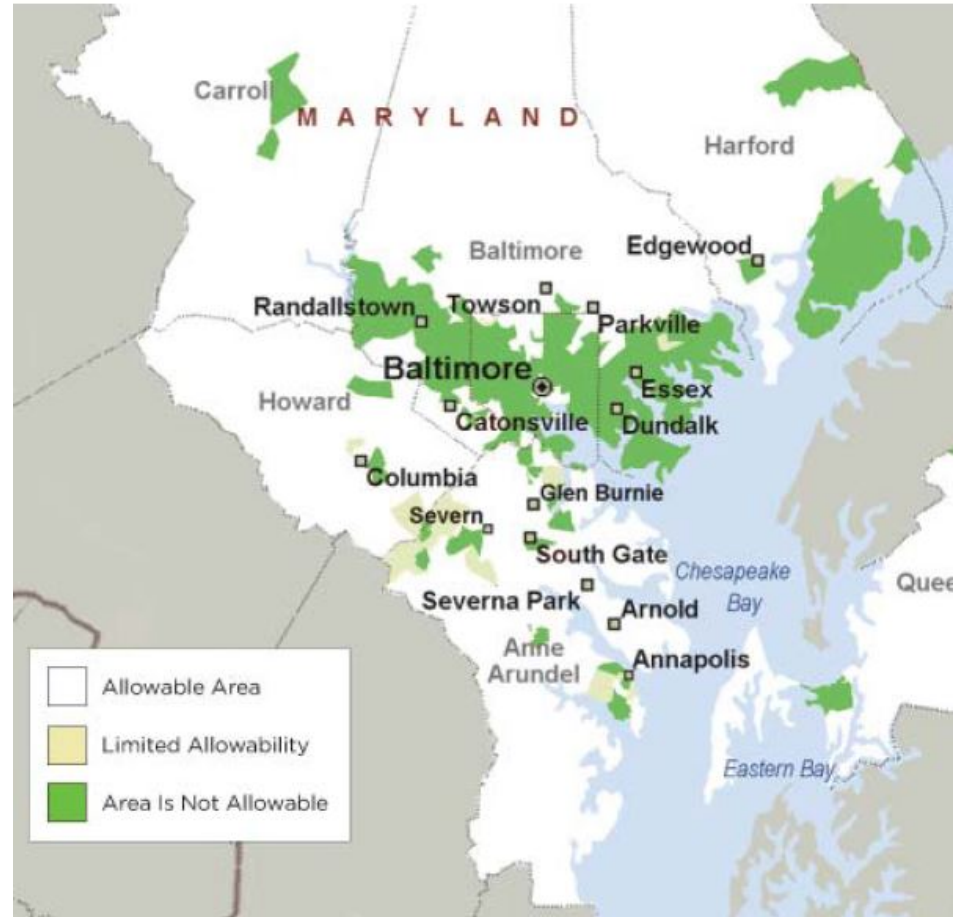
Sustain Diverse Communities

RACIAL DIVERSITY WITHIN THE PRIORITY FUNDING AREAS OF THE BALTIMORE METROPOLITAN REGION 2010



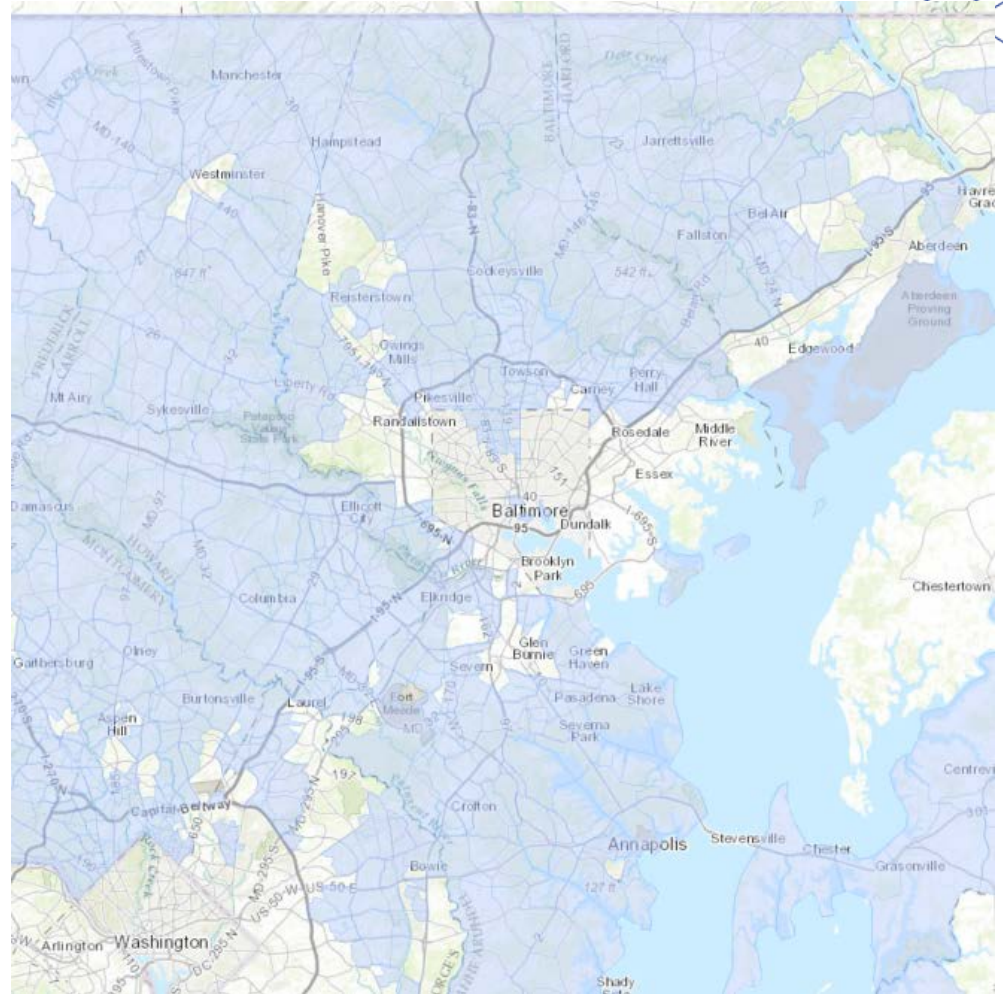
Original Indicators for Housing Mobility Program

- < 10% poverty
- < 30% African American
- < 5% public housing

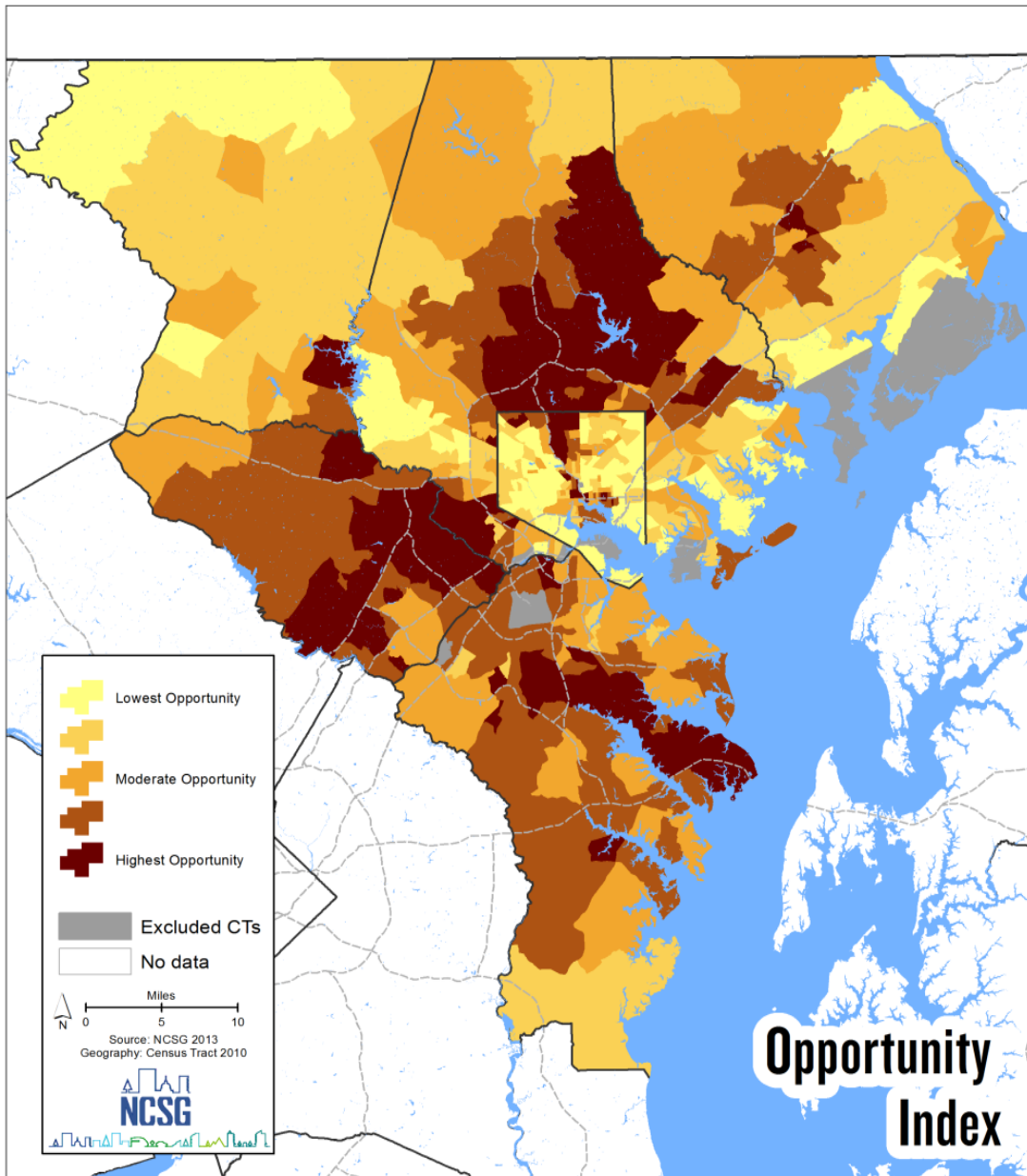


Md. DHCD Opportunity Map

- Used in competition for 9% Low Income Housing Tax Credits
- 11 indicators, including income, poverty, vacancy rate, home value, unemployment rate, commute time, school test scores, share of population with college degree.



OMAP Composite Opportunity Index

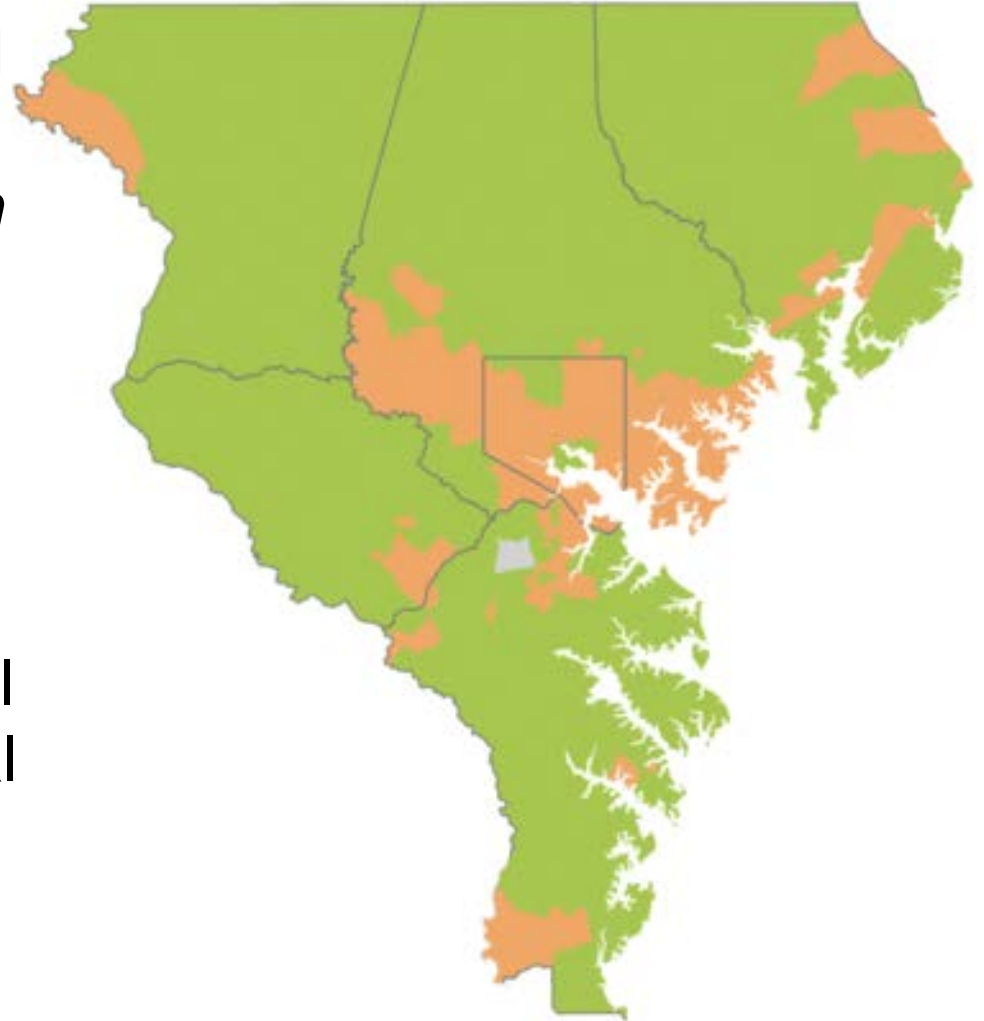


Indicators

- Education
- Housing/Neighborhood
 - Home Value
 - Percent Vacant & Abandoned
- Social Capital
 - Racial Diversity
 - Percent with Bachelor's Degree
- Public Health & Safety
 - Crime Risk
 - Rate Low Birth Weight
 - Access to Parks
- Employment & Workforce
 - Job Growth
 - Jobs within Short Commute
- Transportation & Mobility
 - Short Commutes
 - Walk Score
 - Access to Transit

Current Housing Mobility Program Opportunity Map

- Combination of Maryland DHCD, Opportunity Collaborative, *Thompson v. HUD* consent decree maps
- Used by Baltimore Regional Housing Partnership for regional mobility program, and will be used for new Regional Project-Based Voucher Program



HUD Mapping Tool

<https://egis.hud.gov/affht>

Affirmatively Furthering Fair Housing Tool

Choose a Map :

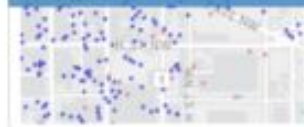
Map 9 -
Demographics
and School
Proficiency



Map 10 -
Demographics
and Job Proximity



Map 11 -
Demographics
and Labor Market



Map 12 -
Demographics
and Transit Trips



Map 13 -
Demographics
and Low
Transportation
Cost



Map 14 -
Demographics
and Poverty



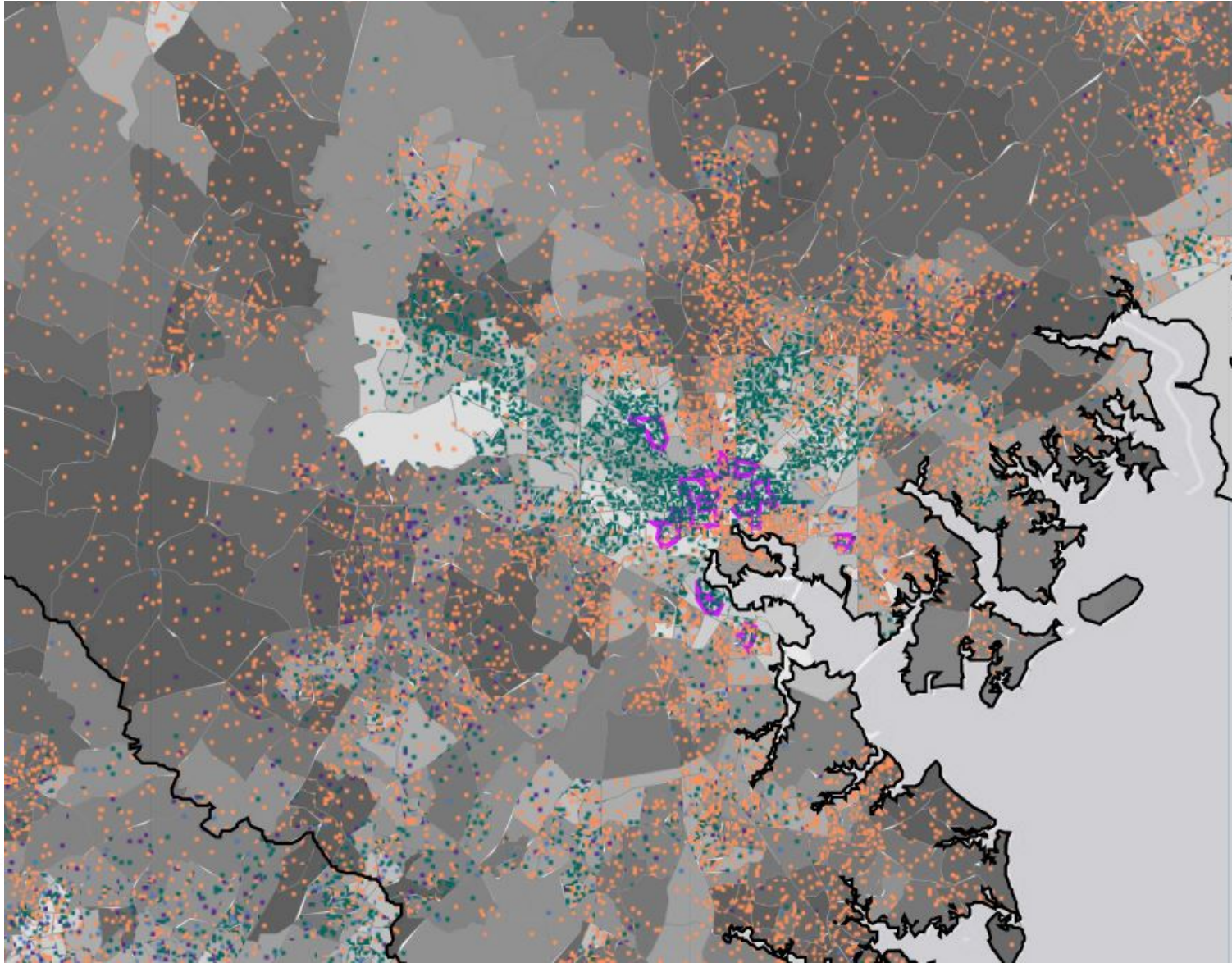
Map 15 -
Demographics
and
Environmental
Health



Map 16 - Disability
by Type



HUD Tool Education Map



HUD Data Table Export

Generate Table

Program Category

Table 8 - Demographics of Publicly Supported Housing Developments, by Program Category

Table 9 - Demographics of Households with Disproportionate Housing Needs

Table 10 - Demographics of Households with Severe Housing Cost Burden

Table 11 - Publicly Supported Housing by Program Category: Units by Number of Bedrooms and Number of Children

Table 12 - Opportunity Indicators by Race/Ethnicity

Table 13 - Disability by Type

Generate Table Export



HUD Data Table

Table 12 - Opportunity Indicators, by Race/Ethnicity

(Baltimore, MD CDBG, HOME, ESG) Jurisdiction	Low Poverty Index	School Proficiency Index	Labor Market Index	Transit Index	Low Transportation Cost Index	Jobs Proximity Index	Environmental Health Index
Total Population							
White, Non-Hispanic	49.45	29.17	64.19	87.51	90.30	58.27	10.49
Black, Non-Hispanic	25.53	17.40	23.52	88.71	90.40	39.42	10.23
Hispanic	31.87	23.25	40.96	88.70	91.59	53.08	8.83
Asian or Pacific Islander, Non-Hispanic	46.72	25.92	66.36	89.27	93.11	64.67	9.40
Native American, Non-Hispanic	29.80	20.51	34.95	88.50	90.97	48.72	9.29
Population below federal poverty line							
White, Non-Hispanic	36.51	22.86	50.13	88.44	92.00	58.88	9.55
Black, Non-Hispanic	17.61	16.08	18.21	89.60	91.89	40.39	9.27
Hispanic	21.98	20.69	37.65	90.30	93.46	48.37	8.53
Asian or Pacific Islander, Non-Hispanic	43.46	26.00	67.74	90.31	95.12	70.30	8.35
Native American, Non-Hispanic	18.27	20.19	29.80	89.51	92.44	47.90	8.63
(Baltimore-Columbia-Towson, MD CBSA) Region	Low Poverty Index	School Proficiency Index	Labor Market Index	Transit Index	Low Transportation Cost Index	Jobs Proximity Index	Environmental Health Index
Total Population							
White, Non-Hispanic	73.77	65.08	73.30	65.92	69.91	52.25	34.85
Black, Non-Hispanic	45.14	34.90	44.71	82.26	84.09	42.83	19.22
Hispanic	60.73	52.10	63.24	75.42	78.56	51.41	27.25
Asian or Pacific Islander, Non-Hispanic	73.75	63.49	79.57	72.82	75.38	55.03	27.74
Native American, Non-Hispanic	57.96	50.47	56.38	74.06	77.46	49.07	25.45
Population below federal poverty line							
White, Non-Hispanic	57.87	53.31	61.03	73.62	77.76	53.90	26.36
Black, Non-Hispanic	28.09	25.91	30.26	85.84	88.18	41.99	14.22
Hispanic	44.69	42.83	56.08	79.71	83.25	52.54	23.46
Asian or Pacific Islander, Non-Hispanic	56.64	48.30	69.26	80.82	85.05	60.70	19.01
Native American, Non-Hispanic	39.97	41.81	46.83	81.47	85.44	55.38	18.07

Note 1: Data Sources: Decennial Census; ACS; Great Schools; Common Core of Data; SABINS; LAI; LEHD; NATA

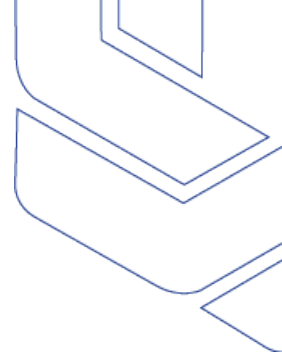
Note 2: Refer to the Data Documentation for details (www.hudexchange.info).

HUD Assessment Tool Questions – Education Opportunity Disparities

- i. Describe any disparities in access to proficient schools based on race/ethnicity, national origin, and family status.
- ii. Describe the relationship between the residency patterns of racial/ethnic, national origin, and family status groups and their proximity to proficient schools.
- iii. Describe how school-related policies, such as school enrollment policies, affect a student's ability to attend a proficient school. Which protected class groups are least successful in accessing proficient schools?



Thank You



Dan Pontious, Housing Policy Coordinator
Baltimore Metropolitan Council

dpontious@baltometro.org

410-732-0500 x1055

www.baltometro.org

www.opportunitycollaborative.org

